

Dye Concentrations Determination in Ternary Mixture Solution by Using Colorimetric Algorithm

Shams-Nateri, Ali**

Textile Engineering Department, University of Guilan, Rasht, I.R. IRAN

ABSTRACT: This publication uses a colorimetric method based on the absorbance spectra of dye solutions to improve on Beer's law when calculating the dye concentrations of a three-component mixture. The performance of the new method is compared with that of Beer's law evaluated at three wavelengths, and Beer's law evaluated at 16 wavelengths. Colorimetric method gives the best prediction of dye concentrations: the average relative errors in its predictions of the blue, red, and yellow concentrations are 55.64%, 12.3% and 14.84% respectively for new test solutions. Its average ternary relative error is 11.68% which is comparable to 14.31% for Beer's law at three wavelengths.

KEY WORDS: Colorimetric algorithm, Beer's law, Dye concentration, Absorbance spectra, Prediction.

INTRODUCTION

The transmission of monochromatic radiation through a dye solution is governed by Beer & Lambert's law, which essentially states that the absorption of light is proportional to the number of absorbing molecules in its path. This theory can also be used when more than one kind of absorbing mater is present. Beer & Lambert's Law (henceforth referred to as Beer's Law for brevity) is written as

$$A = \text{Log} \left(\frac{I_0}{I} \right) = \epsilon \times L \times C \quad (1)$$

where A is the absorbance; I_0 is the original intensity of the light beam; I is the intensity of the beam after passing through the sample; ϵ is the absorptivity, which depends on the absorbing molecule and the wavelength; L is the distance light travels through the sample, or path length; and C is the concentration.

All multi-component, quantitative dye models are based on the principle that the absorbance of a mixture is equal to the sum of the absorbance of its components. This is true at any given wavelength, although the relative importance of the components can vary with wavelength as ϵ changes. The concentrations do not change, however, and can be determined with sufficient data.

Absorbance measurements are widely used, through the application of Beer's Law, for determining the amount of colorants in a solution. For example, this technique can be used to quantify the strength of a dye. Beer's law is not perfect, however; there are actually several instrumental and chemical factors that can cause it to deviate from a simple linear form. A chemical deviation might be due to changes in the solubility of the absorbers, due to aggregation or other dye-dye interactions. In addition, the analysis of dye mixtures is often less accurate than that of single-dye solutions [1-9].

* To whom correspondence should be addressed.

+ E-mail: a_shams@guilan.ac.ir

1021-9986/11/4/51

10/\$/3.10

Color matching is defined as a procedure of adjusting a color mixture until difference from a target is eliminated. Colorants formulation method is used to calculating the approximate colorant proportion to match a given object color. The most commonly used method for computer match prediction is colorimetric and spectrophotometric algorithms. In spectrophotometric algorithm, the reflectance spectra of the target and the sample will be matching at all wavelengths. Colorimetric method try to minimize the differences ΔX , ΔY , ΔZ between target and sample. One of the most widely Known of colorimetric technique is the algorithm of Allen. In 1966, Allen explained a successful algorithm for determining the starting recipe, and this has been widely adopted [1, 10]. Allen reasoned that to achieve a tristimulus match we must solve three nonlinear simultaneous equations in three unknowns, the dye concentrations c_1 , c_2 and c_3 (Equation 2):

$$\begin{aligned} X &= g_1(c_1, c_2, c_3) \\ Y &= g_2(c_1, c_2, c_3) \\ Z &= g_3(c_1, c_2, c_3) \end{aligned} \quad (2)$$

Where g_1 , g_2 and g_3 represent certain nonlinear functions of the dye concentrations.

The V, T, E, R and p matrices are first defined (Eq. (3)):

$$\begin{aligned} V &= \begin{bmatrix} X \\ Y \\ Z \end{bmatrix} & T &= \begin{bmatrix} x_{400} \dots x_{700} \\ y_{400} \dots y_{700} \\ z_{400} \dots z_{700} \end{bmatrix} \\ E &= \begin{bmatrix} E_{400} & 0 & \dots & 0 \\ 0 & E_{420} & \dots & 0 \\ \dots & \dots & \dots & \dots \\ 0 & 0 & \dots & E_{700} \end{bmatrix} & R &= \begin{bmatrix} R_{t,400} \\ \dots \\ \dots \\ R_{t,700} \end{bmatrix} \\ P &= \begin{bmatrix} R_{p,400} \\ \dots \\ \dots \\ R_{p,700} \end{bmatrix} \end{aligned} \quad (3)$$

Where x , y and z are color matching function of the International Commission on Illumination (CIE) standard observer, E is the relative Spectral Power Distribution (SPD) of the specified light source, R_t is reflectance of the target to be matched, R_p is reflectance of the computer-

predicted recipe and subscripts 400... represent wavelength in nm.

For a perfect match under a known illuminant, Eq. (4) holds:

$$T \times E \times P = T \times E \times R \quad (4)$$

And therefore (Eq. 5)

$$T \times E \times (P - R) = 0 \quad (5)$$

Allen assumes as an approximation a constant rate of change of $f(R)$ with reflectance over the small difference between the target and the prediction. Eq. (6) can be written with a fair degree of accuracy:

$$\begin{aligned} R_t - R_p &= \Delta R_\lambda \\ &= \left(\frac{dR_\lambda}{d[f(R_\lambda)]} \right) \times \Delta f(R_\lambda) \\ &= \left(\frac{dR_\lambda}{d[f(R_\lambda)]} \right) \times (f(R_{t,\lambda}) - f(R_{p,\lambda})) \end{aligned} \quad (6)$$

We can also define the matrices given in Eq. (7):

$$\begin{aligned} D &= \begin{bmatrix} d_{400} & 0 & \dots & 0 \\ 0 & d_{420} & \dots & 0 \\ \dots & \dots & \dots & \dots \\ 0 & 0 & \dots & d_{700} \end{bmatrix} \\ F &= \begin{bmatrix} f(R_{t,400}) \\ \dots \\ \dots \\ f(R_{t,700}) \end{bmatrix} & G &= \begin{bmatrix} f(R_{p,400}) \\ \dots \\ \dots \\ f(R_{p,700}) \end{bmatrix} \end{aligned} \quad (7)$$

We can now write $R_t - R_p$ for all wavelengths as Eq. (8):

$$R - P = D \times (F - G) \quad (8)$$

Substituting Eq. (8) in Eq. (4), we obtain Eq. (9):

$$T \times E \times (F - G) = 0 \quad (9)$$

Transposing, we have Eq. (10):

$$T \times E \times D \times F = T \times E \times D \times G \quad (10)$$

A further three matrices are now defined as in Eq. (11):

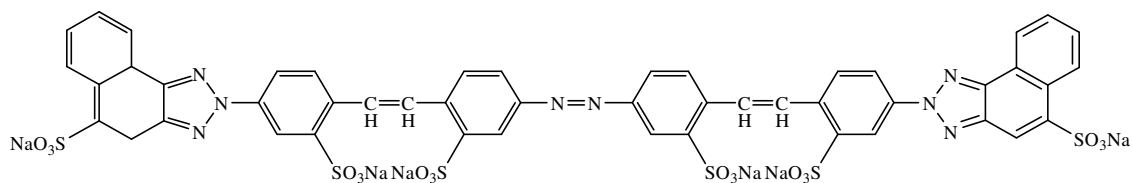


Fig. 1: Chemical structure of Direct yellow 106.

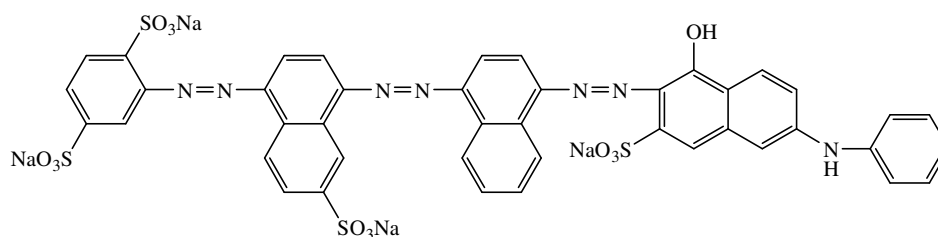


Fig. 2: Chemical structure of Direct Blue 78.

$$A = \begin{vmatrix} a_{400,1} & a_{400,2} & a_{400,3} \\ a_{420,1} & d_{420,2} & a_{420,3} \\ \dots & \dots & \dots \\ a_{700,1} & a_{700,2} & a_{700,3} \end{vmatrix}$$

$$C = \begin{vmatrix} C_1 \\ C_2 \\ C_3 \end{vmatrix} \quad S = \begin{vmatrix} f(R_{s,400}) \\ \dots \\ \dots \\ f(R_{s,700}) \end{vmatrix} \quad (11)$$

Where $a_{400,1}$ is absorption coefficient at wavelength 400 nm of first dye, c_1 = concentration of first dye, $f(R_s, \lambda)$ is Kubelka–Munk function of the substrate.

Then, we can then write Eq. (12):

$$G = S + A \times C \quad (12)$$

Substituting Eq. 12 into Eq. 10 gives Eq. 13:

$$T \times E \times D \times F = T \times E \times D \times (S + A \times C) \quad (13)$$

Transposing gives Eq. 14:

$$T \times E \times D \times A \times C = T \times E \times D \times (F - S) \quad (14)$$

Equation 13 now represents three linear equations in three unknowns (the dye concentrations), which can be solved by the usual calculation of the inverse matrix. Rearranging to obtain C results in Eq. 15 [1, 10-11]:

$$C = (T \times E \times D \times A)^{-1} \times (T \times E \times D \times (F - S)) \quad (15)$$

EXPERIMENTAL SECTION

In this work, the experiments were carried out with three commercial dyes - Celasol Blue 4GL (Direct blue 78), Celasol Red 6BL (Direct red 79), Celasol Yellow 4RL (Direct yellow 106) - were used to prepare a total of 180 three-component mixtures. The stock solutions had a concentration of 1 g/L, which was prepared by dissolving the dye in distilled water. The solutions used were as follows: Direct blue 78 (0.0025, 0.05, 0.01, 0.015, 0.025 and 0.05 g/L), Direct red 79 (0.0005, 0.0025, 0.005, 0.0075, 0.025 g/L) Direct yellow 106 (0.01, 0.02, 0.05, 0.075, 0.1 and 0.125 g/L). The concentrations of dyes were chosen regarding to optimum values of absorbance maximum. The chemical structure of Direct yellow 106, Direct blue 78 and Direct red 79 are shown in Fig. 1, Fig. 2 and Fig. 3 respectively. Also, the absorbance spectra and the chromaticity diagram of dyes are shown in Figs. 4 and 5, respectively. Three-component mixture solutions were prepared from solution stock in a 100 mL volumetric flask. The full visible (380 to 700 nm) absorbance spectra of the solutions were measured by a CINTRA10-UV-Vis spectrophotometer.

One hundred samples were selected for calibration, and 80 samples were used to test its performance. Three different methods Beer's law at three wavelengths, Beer's law at 16 wavelengths, and the colorimetric methods were applied to these data, and their predictions of the dye concentrations based on the absorbance spectra of

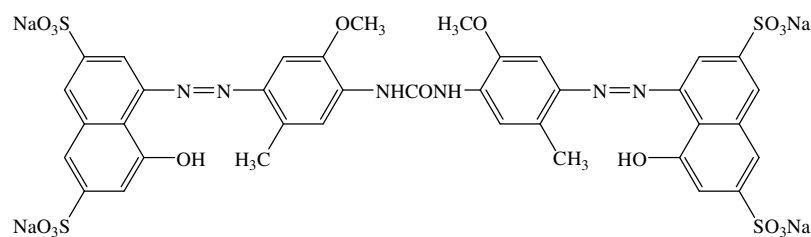


Fig. 3: Chemical structure of Direct red 79.

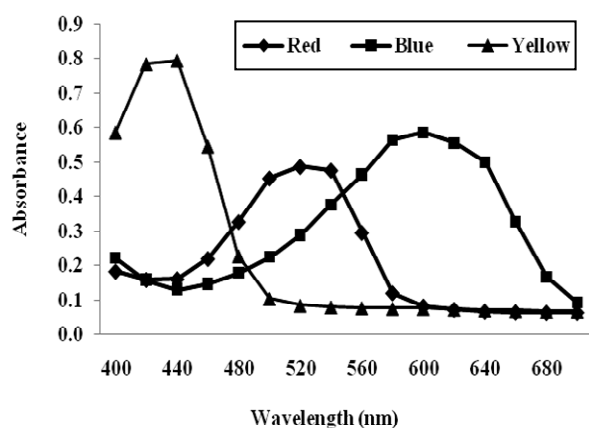


Fig. 4: The absorbance spectra of dyes (0.025 g/L Red, 0.025 g/L Blue, 0.05 g/L Yellow).

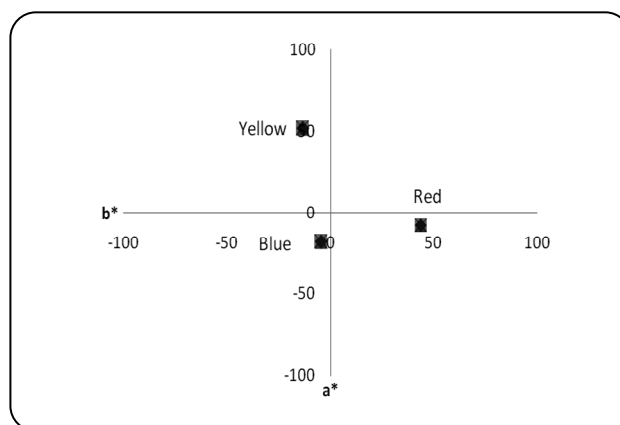


Fig. 5: The chromaticity diagram of dyes (0.025 g/L Red, 0.025 g/L Blue, 0.05 g/L Yellow).

the mixtures were compared. The mathematical foundations of all four methods will be described below.

Beer's law at three wavelengths

The three wavelengths selected are the wavelengths of maximum absorbance (λ_{\max}) for each dye component. Beer's law gives the following three equations:

$$\begin{cases} \text{at } \lambda_{\max 1} & A_{\lambda_1} = \varepsilon_{1,\lambda_1} \times C_1 + \varepsilon_{2,\lambda_1} \times C_2 + \varepsilon_{3,\lambda_1} \times C_3 \\ \text{at } \lambda_{\max 2} & A_{\lambda_2} = \varepsilon_{1,\lambda_2} \times C_1 + \varepsilon_{2,\lambda_2} \times C_2 + \varepsilon_{3,\lambda_2} \times C_3 \\ \text{at } \lambda_{\max 3} & A_{\lambda_3} = \varepsilon_{1,\lambda_3} \times C_1 + \varepsilon_{2,\lambda_3} \times C_2 + \varepsilon_{3,\lambda_3} \times C_3 \end{cases} \quad (16)$$

where the subscripts are associated with the three components. Thus, $\varepsilon_{j,\lambda_i}$ is the absorptivity of component j at the maximum absorption wavelength of component i .

Eq. 16 can be rewritten in matrix form:

$$\begin{bmatrix} A_{\lambda_1} \\ A_{\lambda_2} \\ A_{\lambda_3} \end{bmatrix} = \begin{bmatrix} \varepsilon_{1,\lambda_1} & \varepsilon_{2,\lambda_1} & \varepsilon_{3,\lambda_1} \\ \varepsilon_{1,\lambda_2} & \varepsilon_{2,\lambda_2} & \varepsilon_{3,\lambda_2} \\ \varepsilon_{1,\lambda_3} & \varepsilon_{2,\lambda_3} & \varepsilon_{3,\lambda_3} \end{bmatrix} \times \begin{bmatrix} C_1 \\ C_2 \\ C_3 \end{bmatrix} \quad (17)$$

which in turn can be simplified to

$$A = MC \quad (18)$$

A is the vector of absorbances, M is the matrix of absorptivity coefficients, and C is the vector of dye concentrations.

The coefficients of M are determined from calibration samples by applying Eq. (19):

$$M = AC^{-1} \quad (19)$$

The concentrations in an unknown solution are then calculated as

$$C = M^{-1}A. \quad (20)$$

Beer's law at 16 wavelengths

The absorbance spectrum of the mixture is measured at 16 wavelengths between 400 nm and 700 nm (20 nm intervals). Beer's law results in 16 equations within the visible spectrum:

$$\begin{cases} A_{400} = \varepsilon_{1,400} \times C_1 + \varepsilon_{2,400} \times C_2 + \varepsilon_{3,400} \times C_3 \\ A_{420} = \varepsilon_{1,420} \times C_1 + \varepsilon_{2,420} \times C_2 + \varepsilon_{3,420} \times C_3 \\ \cdot \\ \cdot \\ A_{700} = \varepsilon_{1,700} \times C_1 + \varepsilon_{2,700} \times C_2 + \varepsilon_{3,700} \times C_3 \end{cases} \quad (21)$$

Again, $\varepsilon_{j,\lambda}$ is the absorptivity of component j at wavelength λ and C_j is the concentration of component j .

Eq. (21) can be rewritten in matrix form:

$$\begin{bmatrix} A_{400} \\ A_{420} \\ \cdot \\ \cdot \\ A_{700} \end{bmatrix} = \begin{bmatrix} \varepsilon_{1,400} & \varepsilon_{2,400} & \varepsilon_{3,400} \\ \varepsilon_{1,420} & \varepsilon_{2,420} & \varepsilon_{3,420} \\ \cdot & \cdot & \cdot \\ \cdot & \cdot & \cdot \\ \varepsilon_{1,700} & \varepsilon_{2,700} & \varepsilon_{3,700} \end{bmatrix} \times \begin{bmatrix} C_1 \\ C_2 \\ C_3 \end{bmatrix} \quad (22)$$

or equivalently

$$A = QC \quad (23)$$

Note that unlike M , the matrix Q is not square. The coefficients of Q are determined from the absorbance spectra of known calibration samples using Eq. (24):

$$Q = AC^{-1} \quad (24)$$

Subsequently, the dye concentrations are calculated by Eq. (25):

$$C = Q^{-1}A \quad (25)$$

Colorimetric method

In this method, the concentrations of the colorants are determined such that:

$$\begin{bmatrix} X_t \\ Y_t \\ Z_t \end{bmatrix} = \begin{bmatrix} X_p \\ Y_p \\ Z_p \end{bmatrix} \quad (26)$$

Where X_t , Y_t and Z_t are the tristimulus values of the target solution and X_p , Y_p and Z_p are the tristimulus values of a previously matched (known) sample under D65 illuminant and a standard colorimetric observer. The tristimulus values can be calculated from the transmittance spectra of a three-component mixture by Eqs. (27-29):

$$X = \frac{100}{K} \sum_{\lambda} E_{\lambda} \times T_{\lambda} \times \bar{x}_{\lambda} \quad (27)$$

$$Y = \frac{100}{K} \sum_{\lambda} E_{\lambda} \times T_{\lambda} \times \bar{y}_{\lambda} \quad (28)$$

$$Z = \frac{100}{K} \sum_{\lambda} E_{\lambda} \times T_{\lambda} \times \bar{z}_{\lambda} \quad (29)$$

Where T_{λ} is the transmittance value at wavelength λ , E_{λ} is the spectral power distribution of the D65 illuminant at wavelength λ , and $\bar{x}_{\lambda}, \bar{y}_{\lambda}, \bar{z}_{\lambda}$ are the color-matching functions of the 10° standard colorimetric observer at wavelength λ . The parameter K is defined as $\sum_{\lambda} E_{\lambda} \bar{y}_{\lambda}$. Eq. (26) is extended to Equation 30 by substitution of Eqs. (27-29):

$$NET_t = NET_p \quad (30)$$

Where N , E , T_t and T_p are defined as follows:

$$N = \begin{bmatrix} \bar{x}_{400} & \bar{x}_{420} & \cdot & \cdot & \cdot & \bar{x}_{700} \\ \bar{y}_{400} & \bar{y}_{420} & \cdot & \cdot & \cdot & \bar{y}_{700} \\ \bar{z}_{400} & \bar{z}_{420} & \cdot & \cdot & \cdot & \bar{z}_{700} \end{bmatrix} \quad (31)$$

$$E = \begin{bmatrix} E_{400} & 0 & 0 & 0 & 0 & 0 & 0 \\ 0 & E_{420} & 0 & 0 & 0 & 0 & 0 \\ 0 & 0 & \cdot & 0 & 0 & 0 & 0 \\ 0 & 0 & 0 & \cdot & 0 & 0 & 0 \\ 0 & 0 & 0 & 0 & \cdot & 0 & 0 \\ 0 & 0 & 0 & 0 & 0 & E_{680} & 0 \\ 0 & 0 & 0 & 0 & 0 & 0 & E_{700} \end{bmatrix} \quad (32)$$

$$T_t = \begin{bmatrix} T_{t,400} \\ T_{t,420} \\ \cdot \\ \cdot \\ \cdot \\ T_{t,700} \end{bmatrix} \quad (33)$$

$$T_p = \begin{bmatrix} T_{p,400} \\ T_{p,420} \\ \cdot \\ \cdot \\ \cdot \\ T_{p,700} \end{bmatrix} \quad (34)$$

Equation 30 can be rewritten as

$$NE(T_t - T_p) = 0 \quad (35)$$

where 0 is the zero vector. If the first dye concentration is changed by a small amount Δc_1 , the tristimulus values would change as follows:

$$\begin{aligned} \Delta X &= \left(\frac{\partial X}{\partial C_1} \right) \times \Delta C_1 \\ \Delta Y &= \left(\frac{\partial Y}{\partial C_1} \right) \times \Delta C_1 \\ \Delta Z &= \left(\frac{\partial Z}{\partial C_1} \right) \times \Delta C_1 \end{aligned} \quad (36)$$

If all three dye concentrations are changed by the small amounts Δc_1 , Δc_2 and Δc_3 , the consequent changes in X, Y and Z are the sum of the individual changes calculated using Eq. (37):

$$\begin{aligned} \Delta X &= \left(\frac{\partial X}{\partial C_1} \right) \times \Delta C_1 + \left(\frac{\partial X}{\partial C_2} \right) \times \Delta C_2 + \left(\frac{\partial X}{\partial C_3} \right) \times \Delta C_3 \\ \Delta Y &= \left(\frac{\partial Y}{\partial C_1} \right) \times \Delta C_1 + \left(\frac{\partial Y}{\partial C_2} \right) \times \Delta C_2 + \left(\frac{\partial Y}{\partial C_3} \right) \times \Delta C_3 \\ \Delta Z &= \left(\frac{\partial Z}{\partial C_1} \right) \times \Delta C_1 + \left(\frac{\partial Z}{\partial C_2} \right) \times \Delta C_2 + \left(\frac{\partial Z}{\partial C_3} \right) \times \Delta C_3 \end{aligned} \quad (37)$$

Furthermore, the partial derivatives of X can be obtained by Eq. (25) (the partials of Y and Z are obtained similarly):

$$\left(\frac{\partial X}{\partial C_i} \right) = \sum_{\lambda} E_{\lambda} \times \bar{x}_{\lambda} \times \left(\frac{\partial T_{\lambda}}{\partial C_i} \right) \quad (38)$$

or equivalently

$$\begin{aligned} \left(\frac{\partial X}{\partial C_i} \right) &= \sum_{\lambda} E_{\lambda} \times \bar{x}_{\lambda} \times \left(\frac{\partial T_{\lambda}}{\partial A_{\lambda}} \right) \times \left(\frac{\partial A_{\lambda}}{\partial C_i} \right) \\ \left(\frac{\partial Y}{\partial C_i} \right) &= \sum_{\lambda} E_{\lambda} \times \bar{y}_{\lambda} \times \left(\frac{\partial T_{\lambda}}{\partial A_{\lambda}} \right) \times \left(\frac{\partial A_{\lambda}}{\partial C_i} \right) \\ \left(\frac{\partial Z}{\partial C_i} \right) &= \sum_{\lambda} E_{\lambda} \times \bar{z}_{\lambda} \times \left(\frac{\partial T_{\lambda}}{\partial A_{\lambda}} \right) \times \left(\frac{\partial A_{\lambda}}{\partial C_i} \right) \end{aligned} \quad (39)$$

From Beer-Lambert's law:

$$\left(\frac{\partial A_{\lambda}}{\partial C_1} \right) = \epsilon_{1,\lambda}, \quad \left(\frac{\partial A_{\lambda}}{\partial C_2} \right) = \epsilon_{2,\lambda}, \quad \left(\frac{\partial A_{\lambda}}{\partial C_3} \right) = \epsilon_{3,\lambda} \quad (40)$$

Returning to Eq. (35), we can write the difference in transmittance vectors as

$$T_t - T_p = \Delta T = \frac{\partial T}{\partial A} \times \Delta A = \frac{\partial T}{\partial A} \times (A_{t,\lambda} - A_{p,\lambda}) \quad (41)$$

$$T = 10^{-A} \quad (42)$$

We now define

$$d_{\lambda} = \frac{dT_{\lambda}}{dA_{\lambda}} = -1 \times \ln(10) \times 10^{-A_{\lambda}} \quad (43)$$

and

$$D = \begin{bmatrix} d_{400} & 0 & 0 & 0 & 0 & 0 & 0 \\ 0 & d_{420} & 0 & 0 & 0 & 0 & 0 \\ 0 & 0 & . & 0 & 0 & 0 & 0 \\ 0 & 0 & 0 & . & 0 & 0 & 0 \\ 0 & 0 & 0 & 0 & . & 0 & 0 \\ 0 & 0 & 0 & 0 & 0 & d_{680} & 0 \\ 0 & 0 & 0 & 0 & 0 & 0 & d_{700} \end{bmatrix} \quad (44)$$

allowing us to write

$$T_t - T_p = D(A_t - A_p) \quad (45)$$

Finally, Eq. (35) becomes

$$NED(A_t - A_p) = 0 \quad (46)$$

which leads to

$$NED(A_t - \phi C) = 0 \quad (47)$$

The ϕ matrix is defined by Eq. (48):

$$\phi = \begin{bmatrix} \epsilon_{1,400} & \epsilon_{2,400} & \epsilon_{3,400} \\ \epsilon_{1,420} & \epsilon_{2,420} & \epsilon_{3,420} \\ . & . & . \\ . & . & . \\ . & . & . \\ \epsilon_{1,700} & \epsilon_{2,700} & \epsilon_{3,700} \end{bmatrix} \quad (48)$$

Therefore, the dye concentrations are determined by Eq. (49):

$$C = (NED\phi)^{-1} (NEDA_t) \quad (49)$$

The initial match may not be very satisfactory, subsequently, to get a closer match to the standard,

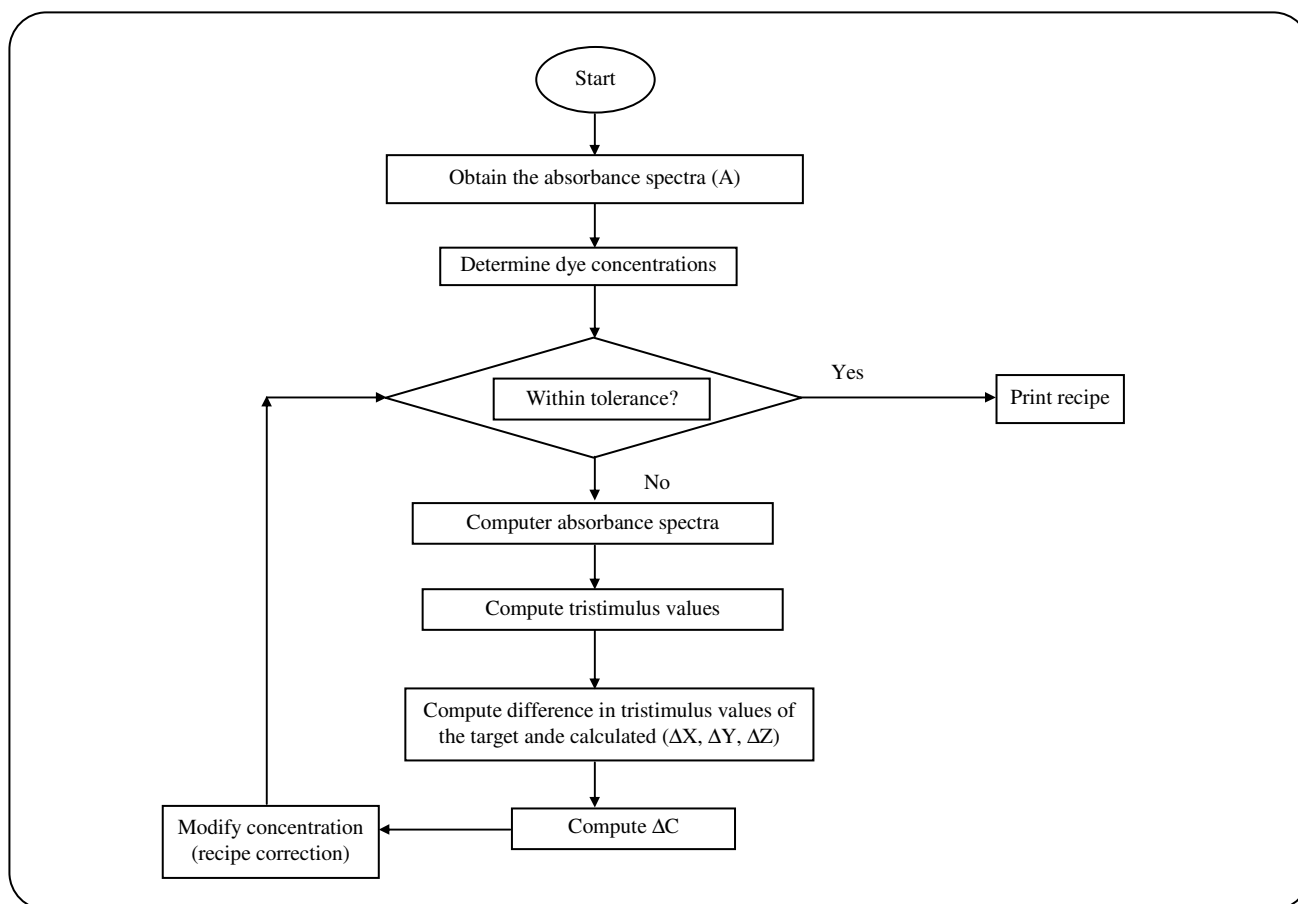


Fig. 6: The flow chart of colorimetric method.

correction of initial result is carried out by iteration technique. In this method, the change of tristimulus values with change of concentration of each component were used to correct the initial concentration (Eq. (50)).

$$\Delta C = (\text{NED}\phi)^{-1} T \quad (50)$$

Where ΔC and T vectors are obtained by Eqs. (51) and (52):

$$\Delta C = \begin{bmatrix} \Delta C_1 \\ \Delta C_2 \\ \Delta C_3 \end{bmatrix} \quad (51)$$

$$T = \begin{bmatrix} \Delta X \\ \Delta Y \\ \Delta Z \end{bmatrix} \quad (52)$$

Where T represents differences in tristimulus values of the target and calculated formula.

The correction to the initial predicted recipe is done by Eq. (53).

$$C = \begin{bmatrix} C_1 + \Delta C_1 \\ C_2 + \Delta C_2 \\ C_3 + \Delta C_3 \end{bmatrix} \quad (53)$$

The flow chart of colorimetric method is shown in Fig. 6.

RESULTS AND DISCUSSION

This work compares the performance of all three methods in determining the dye contents of three-component mixtures starting from their observed absorbance spectra. The absorbance spectra of 180 different mixtures were divided into two samples: a training set with 100 spectra and a test dataset with 80 spectra.

The relative error (E_r) and ternary relative error (E_{tr}) of each test result are calculated by Eq. (54) and Eq. (55) respectively:

$$E_r = 100 \times \frac{|C_a - C_p|}{C_a} \quad (54)$$

Table 1: Errors in dye concentration prediction by Beer's law at 3 wavelengths.

| Samples | | Relative error, E_r (%) | | | Ternary relative Error, E_{tr} (%) |
|----------|--------|---------------------------|--------|--------|--------------------------------------|
| | | Blue | Red | Yellow | |
| Total | Mean | 38.11 | 28.69 | 21.87 | 14.31 |
| | Median | 15.30 | 7.48 | 9.31 | 9.57 |
| | Max | 307.58 | 363.19 | 204.48 | 72.57 |
| | Min | 0.51 | 0.05 | 0.13 | 0.59 |
| | SD | 62.22 | 58.71 | 35.38 | 13.88 |
| Training | Mean | 66.73 | 9.72 | 13.44 | 10.66 |
| | Median | 30.04 | 5.41 | 6.64 | 6.70 |
| | Max | 289.04 | 48.37 | 71.46 | 50.38 |
| | Min | 0.51 | 0.05 | 0.13 | 0.59 |
| | SD | 72.25 | 12.48 | 15.38 | 10.40 |
| Testing | Mean | 27.10 | 35.99 | 25.12 | 15.71 |
| | Median | 11.84 | 9.37 | 9.78 | 10.29 |
| | Max | 307.58 | 363.19 | 204.48 | 72.57 |
| | Min | 0.51 | 0.11 | 0.71 | 1.39 |
| | SD | 54.31 | 67.31 | 40.11 | 14.81 |

$$E_{tr} = 100 \times$$

$$\sqrt{\frac{(C_a - C_p)_{Red}^2 + (C_a - C_p)_{Blue}^2 + (C_a - C_p)_{Yellow}^2}{(C_a)_{Red}^2 + (C_a)_{Blue}^2 + (C_a)_{Yellow}^2}} \quad (55)$$

where C_a is the actual concentration value and C_p is the predicted concentration value. Note that the first error is calculated independently for each color of dye.

First the concentrations were evaluated by Beer's law at three wavelengths: 555nm, 495nm, and 400 nm. These are the wavelengths of maximum absorbance for the blue, red and yellow dyes respectively. The results obtained from the total, training, and test samples are shown in Table 1. The average relative errors (E_r) in the entire samples are 38.11%, 28.69% and 21.87% for blue, red and yellow components respectively. The average relative errors in the training samples are 66.73%, 9.72% and 13.44% for the blue, red and yellow components respectively. The average relative errors in the test sample are 27.1%, 35.99% and 25.12%, in the same order. The average ternary relative errors (E_{tr}) of the total, training and test samples are 14.31, 10.66% and 15.71% respectively.

The second method tested was Beer's law at 16 wavelengths (Table 2). The average relative errors obtained by this method are significantly higher: 82.33%, 97.59% and 90.68% in the total sample, 118.56%, 80.30% and 100.68% in the training sample and 68.40%, 104.24% and 86.83% in the test sample. The ternary relative errors in the total, training and testing samples averaged 90.82, 100.06% and 87.06% respectively.

In spectroscopy measurement, the Beer's law as common linear relationship states that the absorbance is directly proportional to concentration. The linearity of absorbance spectra is dependent on wavelength. The best calibration in terms of linearity is obtained at the wavelength of maximum absorbance at which the correlation coefficient approaches unity. Correlation coefficient of zero indicates that there is no correlation between absorbance and concentration. In this, the error of concentration prediction is highest than the wavelength of maximum absorbance. Then, the calculation of dye concentrations at three wavelengths (Beer's law) produces smaller error compared to that at 16 wavelengths.

Finally, in the colorimetric method (Table 3), dye concentrations were evaluated by matching the

Table 2: Errors in dye concentration prediction by Beer's law at 16 wavelengths..

| Samples | | Relative error, E _r (%) | | | Ternary relative Error, E _r (%) |
|----------|--------|------------------------------------|--------|--------|--|
| | | Blue | Red | Yellow | |
| Total | Mean | 82.33 | 97.59 | 90.68 | 90.82 |
| | Median | 65.62 | 77.96 | 94.09 | 93.42 |
| | Max | 646.30 | 797.97 | 151.17 | 149.88 |
| | Min | 4.47 | 1.27 | 9.60 | 40.91 |
| | SD | 70.37 | 108.80 | 21.09 | 15.99 |
| Training | Mean | 118.56 | 80.30 | 100.68 | 100.6 |
| | Median | 87.67 | 86.04 | 99.08 | 98.32 |
| | Max | 646.30 | 225.71 | 151.17 | 149.88 |
| | Min | 4.47 | 1.27 | 9.60 | 40.91 |
| | SD | 103.74 | 41.80 | 20.25 | 13.67 |
| Testing | Mean | 68.40 | 104.24 | 86.83 | 87.06 |
| | Median | 62.11 | 75.06 | 92.03 | 90.83 |
| | Max | 311.42 | 797.97 | 129.49 | 117.26 |
| | Min | 4.47 | 2.40 | 9.60 | 40.91 |
| | SD | 45.60 | 124.91 | 20.19 | 15.25 |

tristimulus values of the target solution to known samples described using Beer's Law at 16 wavelengths. The approach is similar to the usual single-constant colorimetric match prediction algorithm. The average relative errors in the total samples are 55.44%, 12.38% and 15.27% for blue, red and yellow components, respectively. The average relative errors in the training samples are 112.58%, 11.39% and 20.44% for blue, red and yellow components, respectively. The average relative errors in the test samples are 33.46%, 12.76% and 13.28% for blue, red and yellow dyes, respectively. The ternary relative errors are 12.1, 15.65% and 10.73% for the total, training and test samples respectively. Afterward, the initial predicted concentration is corrected by using iteration technique (Eq. (53)). Table 4 shows the obtained results in computer iteration technique. As shown in this Table, the average relative errors for the total samples are 55.64%, 12.03% and 14.84% for blue, red and yellow components, respectively. The average relative errors for the training samples are 61.71%, 15.08% and 17.15% for blue, red and yellow components, respectively. The average relative errors for the test samples are 48.05%, 8.21% and 11.95% for blue,

red and yellow components, respectively. The ternary relative errors are quite good, averaging 11.68 %, 12.86% and 10.22% for the total, training and test samples respectively.

CONCLUSIONS

The prediction of dyes concentration in multiple-mixture from absorbance spectra is possible by using several methods. In this work, new method based on colorimetric matching of absorbance spectra is used to determining the dye concentrations in a three-component mixture. Colorimetric algorithm based on the absorbance of the solution is compared to other techniques: Beer's law at three wavelengths, and Beer's law at 16 wavelengths. The only method to perform badly was Beer's law at 16 wavelengths. Among the other three methods, colorimetric method achieves the lowest average ternary relative error (11.68%, compared to 14.31% for Beer's law). The colorimetric method based on the absorbance tries to minimize the differences of the X, Y and Z tristimulus values between the prediction and target under the particular viewing condition. In this method, the concentration prediction accuracy can be

Table 3: Errors in dye concentration prediction by the colorimetric method.

| Samples | | Relative error, E_r (%) | | | Ternary relative Error, E_{tr} (%) |
|----------|--------|---------------------------|--------|--------|--------------------------------------|
| | | Blue | Red | Yellow | |
| Total | Mean | 55.44 | 12.38 | 15.27 | 12.1 |
| | Median | 19.26 | 6.81 | 7.85 | 7.62 |
| | Max | 519.58 | 177.26 | 106.77 | 58.27 |
| | Min | 0.08 | 0.10 | 0.02 | 0.33 |
| | SD | 99.12 | 20.81 | 18.25 | 12.38 |
| Training | Mean | 112.58 | 11.39 | 20.44 | 15.65 |
| | Median | 56.08 | 8.70 | 11.57 | 10.12 |
| | Max | 519.58 | 40.36 | 106.77 | 58.27 |
| | Min | 0.08 | 0.10 | 0.02 | 0.33 |
| | SD | 129.22 | 9.56 | 24.76 | 16.15 |
| Testing | Mean | 33.46 | 12.76 | 13.28 | 10.73 |
| | Median | 11.99 | 6.46 | 7.21 | 7.06 |
| | Max | 430.90 | 177.26 | 69.72 | 44.52 |
| | Min | 0.08 | 0.10 | 0.02 | 0.33 |
| | SD | 74.42 | 23.78 | 14.65 | 10.33 |

Table 4: Errors in dye concentration prediction by the colorimetric method with correction iteration.

| Samples | | Relative error, E_r (%) | | | Ternary relative Error, E_{tr} (%) |
|----------|--------|---------------------------|--------|--------|--------------------------------------|
| | | Blue | Red | Yellow | |
| Total | Mean | 55.64 | 12.03 | 14.84 | 11.68 |
| | Median | 19.67 | 7.05 | 7.10 | 7.19 |
| | Max | 520.34 | 163.48 | 127.95 | 55.50 |
| | Min | 0.08 | 0.12 | 0.12 | 0.32 |
| | SD | 99.47 | 18.55 | 19.36 | 11.57 |
| Training | Mean | 61.71 | 15.08 | 17.15 | 12.86 |
| | Median | 20.25 | 8.91 | 7.59 | 7.49 |
| | Max | 520.34 | 163.48 | 127.95 | 55.50 |
| | Min | 0.08 | 0.17 | 0.24 | 0.78 |
| | SD | 105.03 | 22.85 | 22.84 | 12.79 |
| Testing | Mean | 48.05 | 8.21 | 11.95 | 10.22 |
| | Median | 19.26 | 5.49 | 6.62 | 6.61 |
| | Max | 432.82 | 59.39 | 70.94 | 40.70 |
| | Min | 0.51 | 0.12 | 0.12 | 0.32 |
| | SD | 92.15 | 9.96 | 13.43 | 9.70 |

improved by using computer iteration technique. Besides, the colorimetric method can be used to study the effect of nature and composition of dye solution, for example fluorescent and high concentration dye solutions, which caused shift of wavelength. So that, colorimetric algorithm decreases the effect of wavelength shifting on recipe prediction performance.

Received : May 1, 2010 ; Accepted : May 9, 2011

REFERENCES

- [1] McDonald R., "Colour Physics for Industry", Society of Dyers and Colourists, (1997).
- [2] Owen T., "Fundamentals of Modern UV-Visible Spectroscopy", Agilent Technologies, (2000).
- [3] Jasper W.J., Kovacs E.V., & Berkstresser G.I., Using Neural Networks to Predict Dye Concentrations in Multiple-Dye Mixtures, *Textile Researcher Journal.*, **63**(9), p. 545 (1993).
- [4] Marjoniemi M., Mantysalo E., Neuro-Fuzzy Modeling of Spectroscopic Data, Part A: Modeling of Dye Solutions, *Journal of the Society of Dyers & Colourists.*, **113**, p. 13 (1997).
- [5] Marjoniemi M., Mantysalo E., Neuro-fuzzy Modeling of Spectroscopic Data, Part B: Dye Concentration Prediction, *Journal of the Society of Dyers & Colourists*, **113**, p. 64 (1997).
- [6] Gary N.M., "Modern Concepts of Color and Appearance", Science Publishers Inc. U.S.A, (2000).
- [7] Logan H., "UV and Visible Spectrophotometry in Organic Chemistry". <http://members.aol.com/logan20/uv.html>, (1997).
- [8] Stearns E.I., "The Practice of Absorption Spectrophotometry", Wiley-Interscience, (1969).
- [9] Westland S., Ripamonti C., "Computational Colour Science Using Matlab", John Wiley & Sons, Ltd, England, (2004).
- [10] Allen E., Basic Equations Used in Computer Color Matching, *Journal of the Optical Society America*, **56**, p. 1256 (1966).
- [11] Sluban B., Comparison of Colorimetric and Spectrophotometric Algorithms for Computer match Prediction, *Color Research and Application*, **18**(2), p. 74 (1993).